

JRU CONTTROL PVT LTD

(Formerly PLACKA INSTRUMETS AND CONTROLS PVT LTD)

An ISO 9001:2000
COMPANY



Reg No: RQ91/4527

TYPE 800 PRECISION AIR FILTER REGULATOR

DESCRIPTION

The Type 800 is designed for applications that require high flow capacity and accurate process control. A Poppet valve, which is balanced by utilizing a rolling diaphragm, insures a constant output pressure even during wide supply pressure variations. Stability of regulated pressure is maintained under varying flow conditions through the use of an aspirator tube, which adjusts the air supply in accordance with the flow velocity.

FEATURES

- ❑ **HIGH FLOW CAPACITY** – Allows flows up to 80 SCFM
- ❑ **ON-LINE MAINTENANCE** – can be serviced without removal from airline.
- ❑ **SENSITIVE** – Controls output pressure to within ¼ inch water column pressure
- ❑ **STABLE OUTPUT** – Dampening action of aspirator tube makes this regulator insensitive to changes in flow
- ❑ **BUILT-IN RELIEF** - Ensures rapid response to circuit induced pressure changes.
- ❑ Custom made unit for control valves, Transmitters and other field mounted instruments.
- ❑ Most economically priced.

APPLICATIONS

The type 800 is an ideal choice for any application that calls for accurately maintained output pressure under high flow conditions. This includes, but is not limited to such applications as:

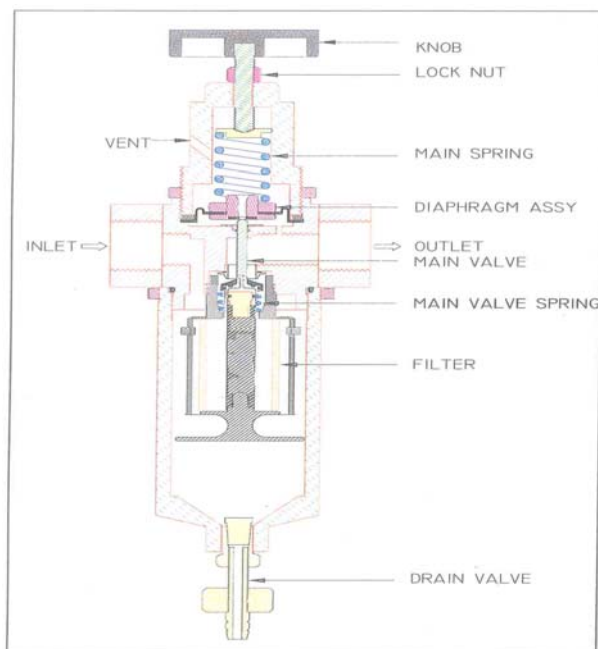
Test Equipment
Gas Mixing
Valve Operators

Laboratory Equipment
Web Tensioning
Clutch and Brake Controls

Roll Loading
Test Panels
Actuators



800 - MFAR-A SERIES



TYPICAL CUT - SECTION

air at a Particular pressure to the outlet. The main valve is supported between the relief valve and the main valve Spring eliminating the need for stem guiding. Toggle action between main valve and relief valve completely eliminates the alignment problems and thus regulates erratic output Pressure.

Regulator maintains a constant and even delivery pressure as selected, independent of the fluctuations in the primary pressure. Regulator maintains its secondary pressure under varying air demand (air flows). This flow characteristic is given in the chart below.

PRESSURE CHARACTERISTICS:

The secondary pressure at the bottom of the diaphragm balances against the set position of the main spring to keep the main valve at the adjusted position. When the secondary pressure rises above the set point, it pushes the diaphragm away from the relief valve and the excess air finds its way to atmosphere through the bleed hole.

FLOW CHARACTERISTICS:

When the air flow from the Regulator is increased the secondary pressure falls below the set point. This 'pressure drop' in supply will force your equipment to function erratically. But JRU Air set reduces the pressure drop successfully by an aspirator. The aspirator connects the outlet port and the chamber under the diaphragm. When flow increases, the aspirator creates a lower pressure below the diaphragm, which in turn forces the main valve to open further and thus more air flows in, to compensate for the pressure drop.

PRINCIPLE OF OPERATION

The TYPE 800 SERIES, Air Filter Regulator with low torque pressure adjustment throughout the entire range of pressure. Regulator adjustment can be easily locked in place with a finger operated friction lock. The primary air through the inlet port, passed through the filter element, leaving down the containments in the bowl. When the knob is adjusted suitably, the Spring acts on the diaphragm, which in turn activates the main valve to allow the pure secondary



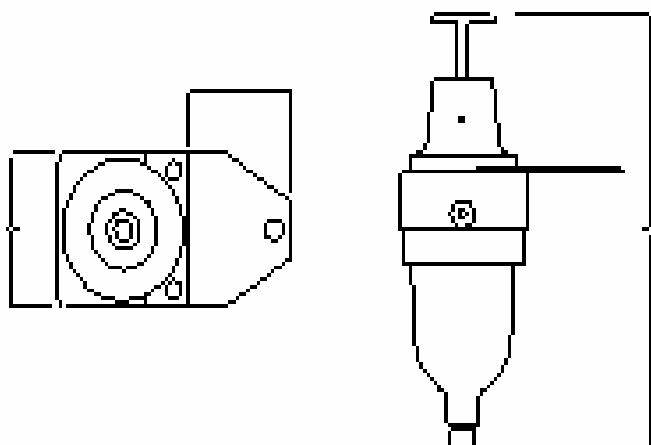
800 - MFAR-P SERIES

General technical data						
Size						
Pneumatic connection	[NPT/BSP]	1/8"	1/4"	3/8"	1/2"	3/4" 1"
Operating medium		Compressed air				
Design		Filter regulator				
		Proportional standard				
Type of mounting		Via accessories				
		In – line installation				
Assembly position		Vertical ±5 °				
Grade of Filtration	[µm]	5 to 40 Micron				
Filter Material		Sintered Bronze / PolyPropylene				
Max. hysteresis	[kg/cm ²]	0.2				
Pressure regulation range	[kg/cm ²]	0.5 to 7				
		0.5 to 12				
Pressure indication Gauge connection	[NPT]	Via pressure gauge				
		1/4" / 1/8" (optional)				
Bowl Capacity	[cc]	80				
Max. Flow	[l/min]	800/2400 (optional)				
Max Input Pressure	[kg/cm ²]	12/18				
Condensate drain		Turned manually				
Materials		Body; Diecast Aluminum alloy, Internal Components; Stainless steel, brass, plated steel, acetal.				
Pressure Gauge Material		Brass internals with CS Cover/Brass internals with SS cover / Fully SS				
Knob		Non Rising (SS screw with Acetal Handle)/ Rising (SS screw with Phenolic Handle)				
Diaphragm		Buna – N elastomer and polyester fabric / Nylon Impregnated Neoprene				
Accuracy		2% / 5%				



800-MFAR-AP SERIES

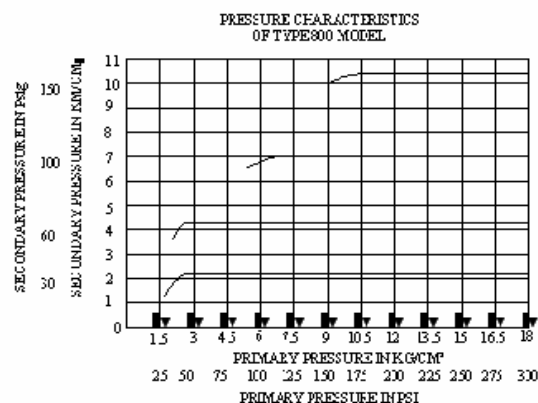
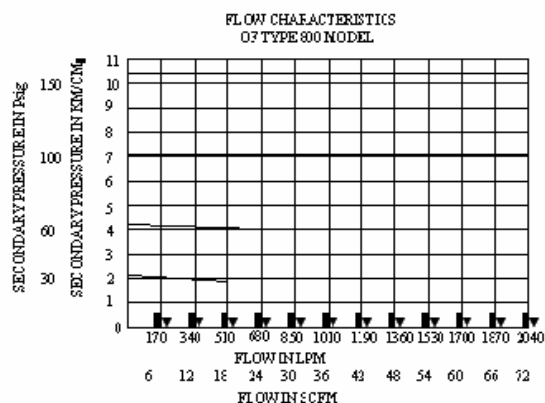
TYPICAL MOUNTING DETAILS



STAINLESS STEEL MODEL



800 – MFAR – SS SERIES



END CONNECTION (NTP/BSP)	SELECT MODEL NUMBERS OUTLET PRESSURE RANGE			
	0 – 2.1 Kg/Sq.cm 0 – 30 PSI	0 – 4.2 Kg/Sq.cm 0 – 60 PSI	0 – 7 Kg/Sq.cm 0 – 100 PSI	0 – 10.6 Kg/Sq.cm 0 – 150 PSI
1/4"	800 - MFAR – 1	800 - MFAR – 2	800 - MFAR – 3	800 - MFAR – 3A
3/8"	800 - MFAR – 4	800 - MFAR – 5	800 - MFAR – 6	800 - MFAR – 6A
1/2"	800 - MFAR – 7	800 - MFAR – 8	800 - MFAR – 9	800 - MFAR – 9A
3/4"	800 - MFAR – 10	800 - MFAR – 11	800 - MFAR – 12	800 - MFAR – 12A
1"	800 - MFAR – 13	800 - MFAR – 14	800 - MFAR – 15	800 - MFAR – 15A

NOTE: Special Version: Model No. MFAR Regulators suffix with 'S' has the exposed parts (Pressure adjustment screw with check nut & Drain valve) in SS to serve better in the corrosive atmosphere of Fertilizer and other Chemical Industries

FULL STAINLESS STEEL MODEL ALSO AVAILABLE ON REQUEST MODE NO. Will suffix with SS (Eq.) MFARSS

BOWL MATERIAL: POLYCARBONATE WITH Al.guard : SUFFIX WITH 'P' ON THE MODEL No: (Eq.) MFARP;

BOWL MATERIAL: ALUMINIUM : SUFFIX WITH 'A' ON THE MODEL No: (Eq.) MFARA

BOWL MATERIAL: ALUMINIUM WITH TOP POLYCARBONATE MODEL NO: (Eq.) MFARAP

A BRIEF PROFILE:

The company JRU CONTTROL (formerly placka instruments & control pvt ltd) was started in the year 1984. It is located 25 km from Chennai airport by the main grand trunk road. It has a land area of 2.5 acres with a built-up area of 10,000sq.ft. The products manufactured are Air Filter Regulator, Lubricator, Air Lock-up relay, Volume Booster, orifice plates, High Flow & Metel Tube Rotameters, Electronic & Pneumatic Level transmitters & Displacement Type Level transmitter. The Factory is equipped with all modern testing facilities for inspection, measuring and testing for quality control.. The products are approved by EIL, BHEL, DAE, ONGC, HPCL, BPCL, IPCL, CPCL, BALCO, NALCO, GSFC , NPCL AND many more. We are an ISO 9001:2000 company. We adhere to strict quality systems.

OUR OTHER PRODUCTS



PRECISION AIR REGULATOR



AIR VOLUME BOOSTER



AIR LOCK-UP RELAY



FRL'S

JRU CONTTROL PVT LTD

5C, RAMAMOORTHY STREET, NEHRU NAGAR, CHROMPET, CHENNAI-600044. INDIA
TEL: +91-044-22234642 FAX: +91-044-22236984 E-MAIL: JRUCONTTROL@GMAIL.COM
WWW.JRUCONTTROL.IN

NOTE: SINCE, CONSTANT WORLDWIDE ADVANCEMENT IN TECHNOLOGY WE KEEP OUR RIGHTS RESERVED TO MAKE CHANGES TIME TO TIME IN TECHNICAL SPECIFICATION, UPGRADATION /DELETION OF PRODUCTS AND DIMENSIONS WITHOUT ANY PRIOR NOTICE. JRU CONTTROL HAVE FULL RIGHTS TO THIS DOCUMENT AND SHALL NOT BE COPIED IN FULL OR PART WITHOUT ITS PRIOR INFORMATION.

REV.1 DATED 11/01/2010